

Ipiutak (350 A.D.) at Point Hope
on Alaskan coast is most remarkable site found
in Arctic.

- a. largest
- b. Art most advanced
- c. 600 sub-Turanian houses
- d. 1- arranged in ridges
2- not occupied for very long
- e. a. 128 houses
b. thin layer of deposit
- D. Bulk of artifacts like seen
individual stamp.

Similarities to Aruk-OBS II

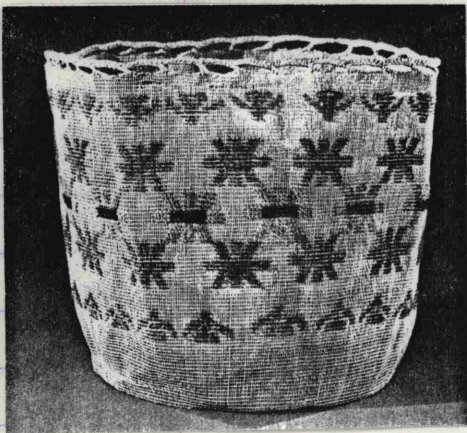
- a. Harpoonhead, socket piece, hard-dart prong,

Cultural resemblances between Ipiutak &
Old World turn up far to West of Bering Strait,
In the Iron Age Cultures of northern Siberia
& Europe.

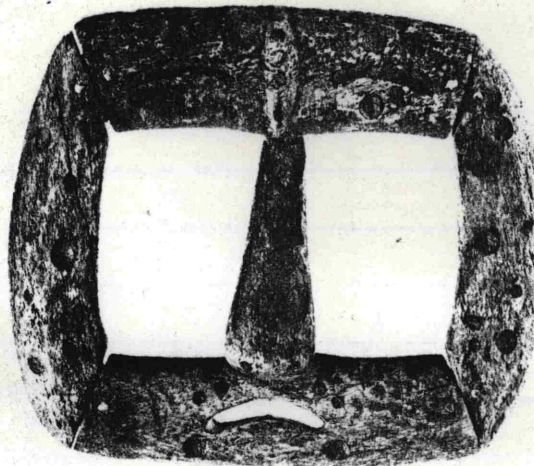
most striking feature of Ipiutak art.

Baja ware ivory carvings - "open work"
object resembling pigtails, chains & link ornaments,
non-functional seaweeds, animal figures,
esp. heads often depicting fantastic rather
than real animals.

Esp. important in this art is the Loon.
he was creature, earth-diver, who brought up
primordial objects up from bottom of ocean to
form the world.
a creature who brings ever-lasting season.



55 LARGE OPEN BASKET
 Wild rye, colored yarns
 26 (10 1/4) HIGH
 Aleutian Islands, probably Attu;
 Emmons Collection?
 Alaska State Museum, II-F-84
Illustrated in color



20 BURIAL MASK
 Bone
 13.8 (5 7/16) WIDE
 Ipiutak
 Discovered in prehistoric village site at
 Ipiutak, near Point Hope
 National Museum of Man, Ottawa,
 IX-F-9913

Engraved with shallow cavities, this unpublished piece is simpler and more abstract in shape and decoration than its more elaborate related example, on permanent exhibition at the American Museum of Natural History (fig. b).

C. D. L.

56 COVERED ATTU BASKET
 Beach grass (?), with designs overlaid in dyed wool; metal rattle
 17 (6 3/4) HIGH
 Near Islands, probably Attu or Agattu, Aleutian Islands
 Collected by Mrs. Mary A. Frothingham, 1908
 Peabody Museum, Harvard University, 45-20-10/27656

The rattle is woven into the protruding handle on the cover, and sounds when the basket is opened.

C. D. L.



57 COVERED ATTU BASKET
 Wild rye, with decorations overlaid in silk floss
 12 (4 3/4) HIGH
 Woven at Atka by Agrafania Zoachny, the Attu wife of the chief, 1915;
 Ella D. Smith Collection
 Museum purchase, Rauch Fund
 Alaska State Museum, II-F-138

This basket presents a striking example of the fine weaving characteristic of the women of Attu.

C. D. L.

